

# WEDDINGS



FURNEAUX  
LODGE

ENDEAVOUR INLET  
MARLBOROUGH SOUNDS



# — TABLE OF CONTENTS



---

<b>FURNEAUX LODGE VENUE HIRE</b>	<b>03</b>
----------------------------------	-----------

---

<b>ENDEAVOUR SUITES</b>	<b>04</b>
-------------------------	-----------

---

<b>TOBIAS JUNIOR SUITE</b>	<b>05</b>
----------------------------	-----------

---

<b>COOK'S COTTAGES</b>	<b>06</b>
------------------------	-----------

---

<b>CATERING</b>	<b>07</b>
-----------------	-----------

---

<b>TRANSPORT RATES</b>	<b>08</b>
------------------------	-----------

---

<b>TERMS AND CONDITIONS</b>	<b>09</b>
-----------------------------	-----------

---





# FURNEAX LODGE VENUE HIRE

Furneaux Lodge offers a beautiful wedding venue for up to 80 guests, with accommodation for 76 people (with additional accommodation at Punga Cove – a 10 minute boat ride away).

We offer a unique and personalised approach to planning and hosting your Furneaux Lodge wedding, ensuring it is the perfect day you've always dreamed of, with picturesque views, a large flat property and delicious food.

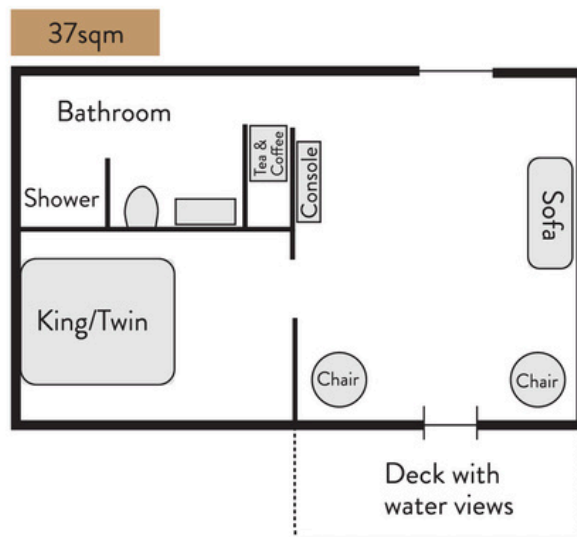
## RESTAURANT

- |                           |                |
|---------------------------|----------------|
| • 17 April - 30 April     | <b>\$8,500</b> |
| • 1 May - 30 September    | <b>\$5,000</b> |
| • 1 October - 15 December | <b>\$8,500</b> |

## BANQUET SEATING (Maximum Numbers)

- |                          |                   |
|--------------------------|-------------------|
| • Restaurant Banquet     | <b>75 guests</b>  |
| • Restaurant and Library | <b>100 guests</b> |

*All prices are nett, gst inclusive and effective from 17 April 2028.*



# ENDEAVOUR SUITES

## NATURALLY SECLUDED

Furneaux Lodge's ten Endeavour Suites offer private waterfront one-bedroom accommodation for up to two people, with stunning sea views.

Relax in the comfort of your contemporary suite, where privacy is combined with spectacular vistas over the sparkling sea, vast lawns and the lush native forest.

Enjoy your morning coffee outside on the deck to drink in the views over Endeavour Inlet, or in the airy dining/lounge area. With king or twin bed options in the separate bedroom, the suites are all ground-level and easily accessible.

Each Endeavour Suite has a small fridge, tea and coffee making facilities, heating/cooling air conditioning and a modern bathroom with a shower.

## PRICING

- 17 April - 30 April
- 1 May - 30 September
- 1 October - 15 December

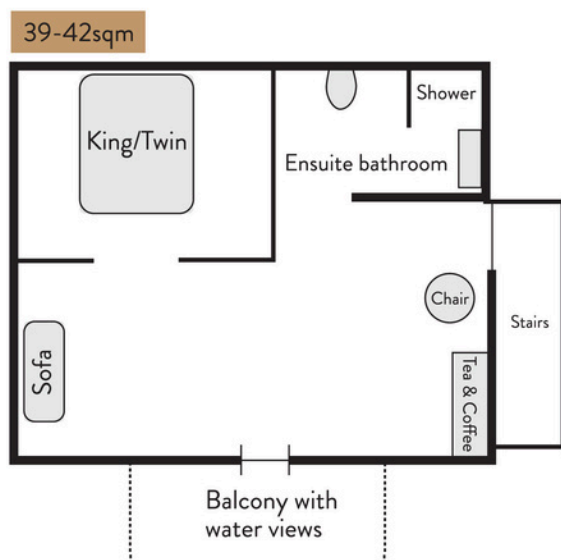
**\$620 per Suite**

**\$490 per Suite**

**\$650 per Suite**

*All prices are nett, gst inclusive and effective from 17 April 2028.*





# — TOBIAS JUNIOR SUITES

## ELEVATED VIEWS, COSY AND RELAXED CONVENIENCE

With ground or first floor options, Furneaux Lodge's four Tobias Junior Suites offer incredible views across Endeavour Inlet, best enjoyed from your private deck or patio.

The one-bedroom suites accommodate up to two people in a king-size bed or twin singles, and include a bathroom with a shower. Each airy unit has a well-appointed lounge/dining area with sea views. Enjoy the convenience of your own tea and coffee making facilities and mini fridge, heating and cooling air conditioning, and easy access to all Furneaux Lodge facilities.

## PRICING

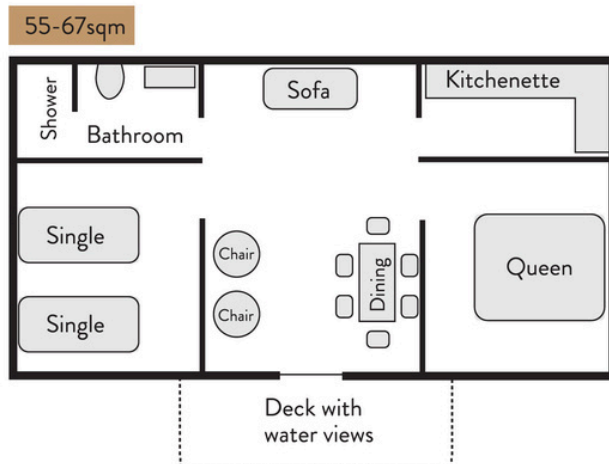
- 17 April - 30 April
- 1 May - 30 September
- 1 October - 15 December

**\$600 per Suite**

**\$470 per Suite**

**\$630 per Suite**

*All prices are nett, gst inclusive and effective from 17 April 2028.*



# — COOK'S COTTAGES

## MODERN CONVENIENCE, EASY COMFORT AND VIEWS

Enjoy your beautiful surroundings from Furneaux Lodge's eight self-contained, two-bedroom Cook's Cottages. Comfortable and well-appointed, each has its own private sundeck overlooking tranquil Endeavour Inlet.

Each cottage includes a kitchenette with tea and coffee making facilities, a microwave and fridge. The living area, which adjoins the deck and takes in the stunning views, has a dining table, comfortable chairs and a sofa, as well as heating and cooling options.

Each cottage features a unique layout, comfortably accommodating four to six guests, with some offering flexible bedding options to suit your needs, and a bathroom with shower. All linen and towels are supplied.

Please ask about our options to include an extra guest, or if you require a larger group booking.

## PRICING

Price is for up to 4 pax per cottage - additional pax \$80pp

- 17 April - 30 April
- 1 May - 30 September
- 1 October - 15 December

**\$750 per Cottage**

**\$630 per Cottage**

**\$780 per Cottage**

*All prices are nett, gst inclusive and effective from 17 April 2028.*





# CATERING

## CANAPES

- Two hot and two cold options
- Three hot and three cold options

**\$40 per guest**

**\$50 per guest**

## GRAZING/HARVEST TABLE

- A selection of cheese and charcuterie accompaniments

**\$45 per guest**

## PRE-DINNER WEDDING BASKETS

- Antipasto-style platter
- Optional - Add on bubbles from wine list

**\$45 per guest**

**POA**

## WEDDING MENUS

- Two course set menu
- Three course set menu
- Buffet style - 2 course
- Buffet style - 3 course

**\$130 per guest**

**\$150 per guest**

**\$130 per guest**

**\$150 per guest**

## MAIN MEALS - Prior or After Wedding

- Low 'n' slow BBQ lunch or dinner
  - **OR** Roasted ham
- Comes with with selection of salads, accompaniments and breads

**\$85 per guest**

**\$70 per guest**

## SUPPER

- A selection of savoury and sweet treats

**\$40 per guest**

## BEVERAGES

- Beverage list will be sent on request as options change consistently
- No BYO for beverages

*All prices are nett, gst inclusive and effective from 17 April 2028.*





# — TRANSPORT RATES

## LAND CHARTER - BLENHEIM TO PICTON

- |                           |              |
|---------------------------|--------------|
| • Van - up to 10 guests   | <b>\$375</b> |
| • Van - up to 19 guests   | <b>\$600</b> |
| • Coach - up to 48 guests | <b>\$950</b> |

ONE-WAY PRICING - PER VEHICLE, NOT PER PERSON.

## VESSEL CHARTERS - PICTON TO ENDEAVOUR INLET

- |  |                |
|--|----------------|
| • Private MTC vessel - up to 80 pax  | <b>\$3900</b>  |
| • Private Cougar Line water taxi - 4 pax<br>(\$50 per additional person - up to 33pax) | <b>\$600</b>   |
| • Scheduled Cougar Line - <b>one way</b>   | <b>\$72pp</b>  |
| • Scheduled Cougar Line - <b>return</b>  | <b>\$117pp</b> |



*All prices are nett, gst inclusive and effective from 1 April 2028.*



# —TERMS & CONDITIONS

## **DEPOSITS**

The venue hire is a non-refundable deposit required to guarantee confirmation of the wedding date.

## **ACCOMMODATION REQUIREMENT**

When a wedding is held at Furneaux Lodge, all accommodation must be booked and paid for by the wedding party and/or their guests for the night of the wedding.

## **PEAK SEASON EXCLUSION (BLACKOUT) DATES:**

No weddings are available on Public Holidays or long weekends. Blackout dates also apply seasonally dependent on business levels and lodge closures.

Peak season blackout dates:

1 January - 16 April and 15 - 31 December

## **WINTER MAINTENANCE PERIOD:**

We close during winter months - please enquire for exact dates.